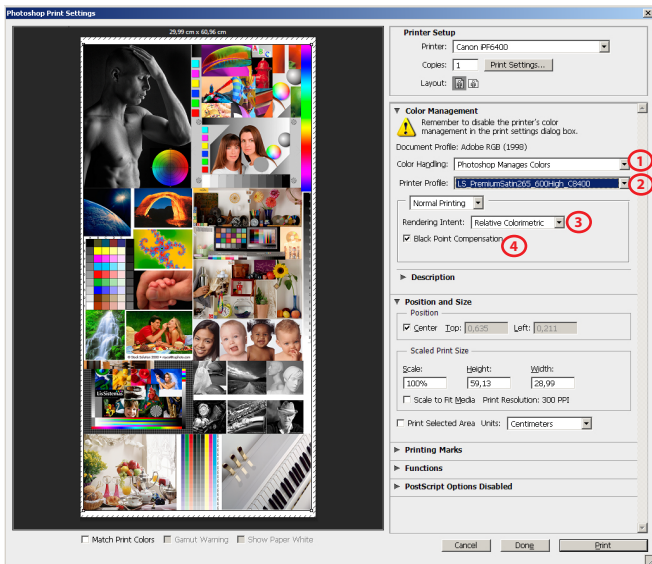


## GUIDE FOR PRINTING ON WINDOWS

Install Profiles on Windows ---> c:/windows/system32/spool/drivers/color

## PHOTOSHOP SETTINGS



1) **Color Handling** - Photoshop Manages Colors

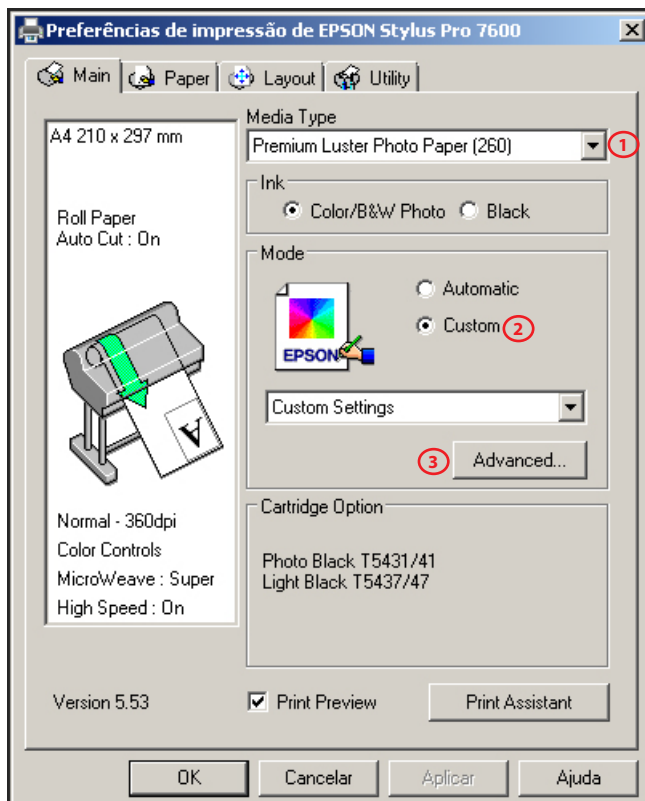
2) **Printer Profile**

*LS\_PremiumLuster240\_1440\_Ex600\_PK.icc*

3) **Rendering Intent** - Relative Colorimetric

4) **Black Point Compensation** activated

## DRIVER SETTINGS



1) **Media Type**

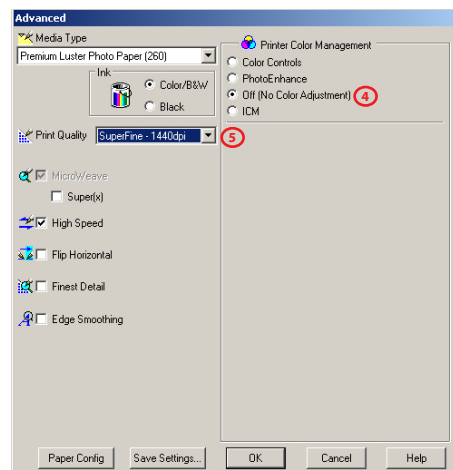
*Premium Semimatte Photo Paper (250)*

2) **Mode** - Custom

3) Click on the Button **Advanced**

4) **Printer Color Management** - Off (No Color Adjustment)

5) **Print Quality** - SuperFine - 1440dpi





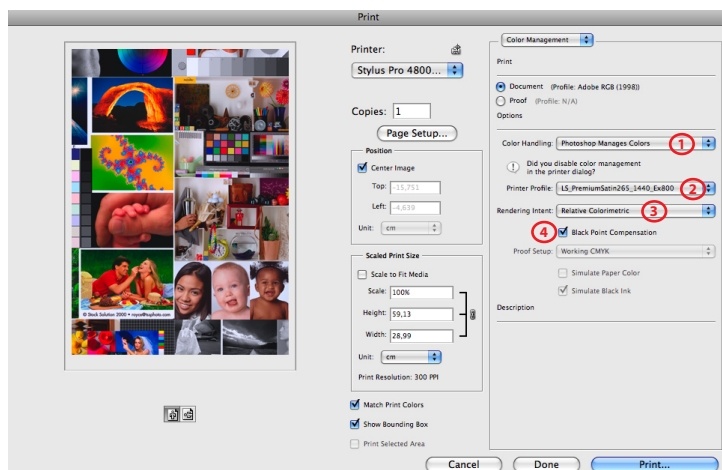
EPSON SPx600

LS PREMIUM LUSTER 240g

## GUIDE FOR PRINTING ON MAC OS X

Install Profiles on Mac OS X ---> Macintosh HD > User > Library > ColorSync > Profiles

## PHOTOSHOP SETTINGS



1) Color Handling - Photoshop Manages Colors

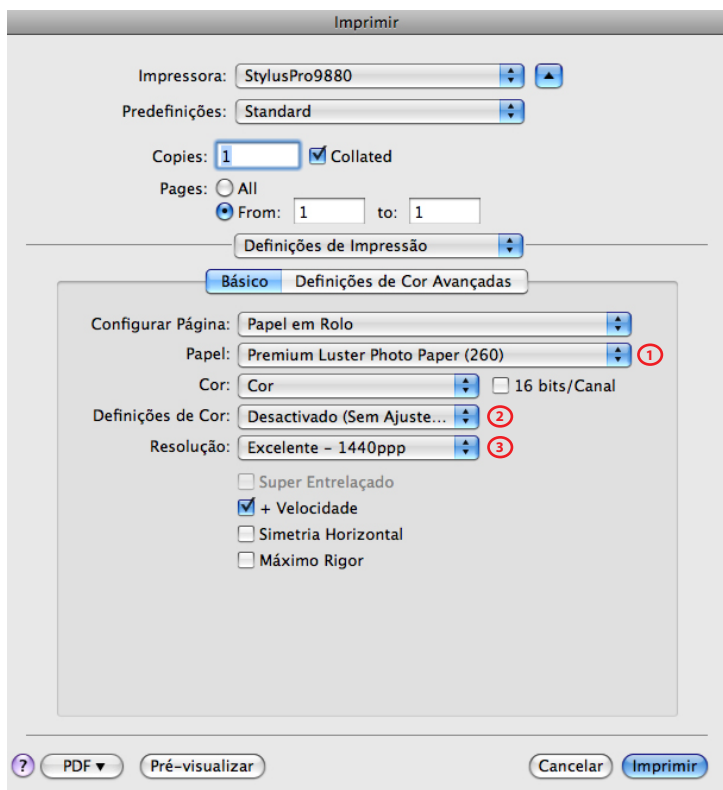
2) Printer Profile

*LS\_PremiumLuster240\_1440\_Ex600\_PK.icc*

3) Rendering Intent - Relative Colorimetric

4) Black Point Compensation activated

## DRIVER SETTINGS



1) Media Type

*Premium Semimatte Photo Paper (250)*

2) Color Mode - No Color Adjustment

3) Print Quality - SuperFine - 1440dpi