

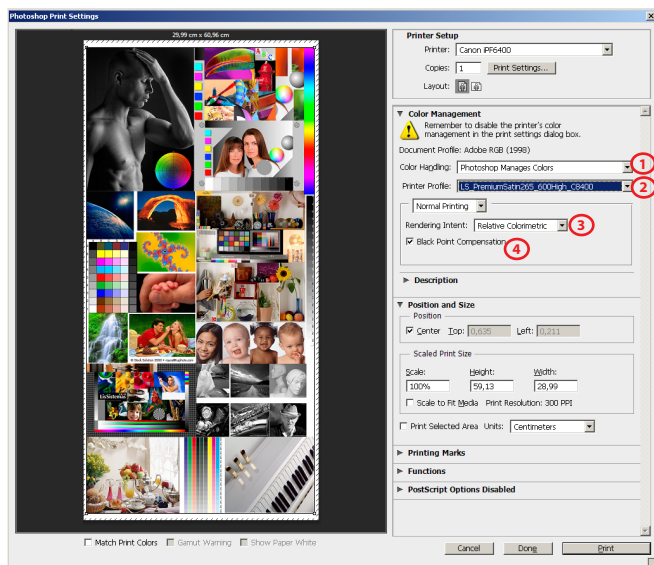
CANON iPF x300

LS PREMIUM LUSTER 240g

GUIDE FOR PRINTING ON WINDOWS

Install Profiles on Windows ---> c:/windows/system32/spool/drivers/color

PHOTOSHOP SETTINGS



1) Color Handling - Photoshop Manages Colors

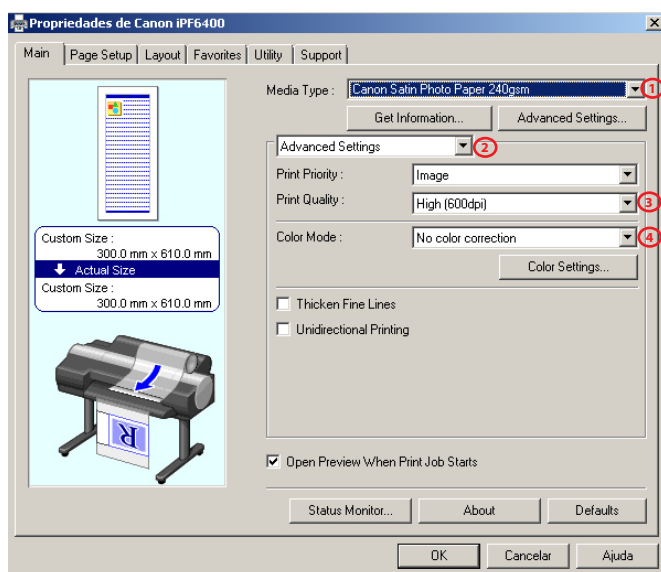
2) Printer Profile

LS_PremiumLuster240_600High_Cx300_PK.icc

3) Rendering Intent - Relative Colorimetric

4) Black Point Compensation activated

DRIVER SETTINGS



1) Media Type

Satin Photographic Paper 240gsm

2) Advanced Settings

3) Print Quality - High (600dpi)

4) Color Mode - No color correction

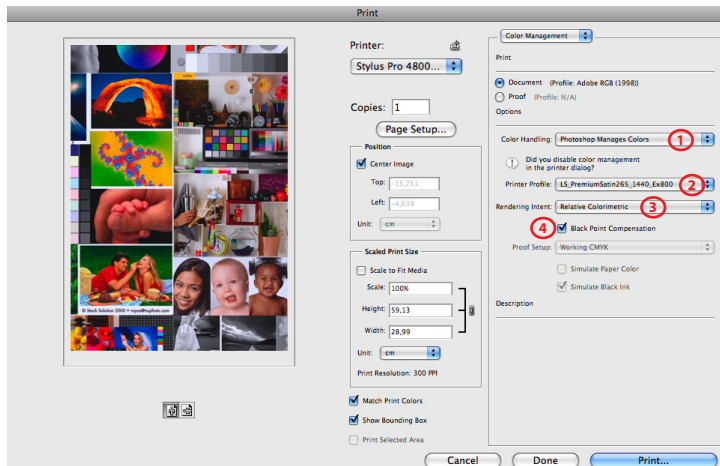
CANON iPF x300

LS PREMIUM LUSTER 240g

GUIDE FOR PRINTING ON MAC OS X

Install Profiles on Mac OS X ---> Macintosh HD > User > Library > ColorSync > Profiles

PHOTOSHOP SETTINGS



1) Color Handling - Photoshop Manages Colors

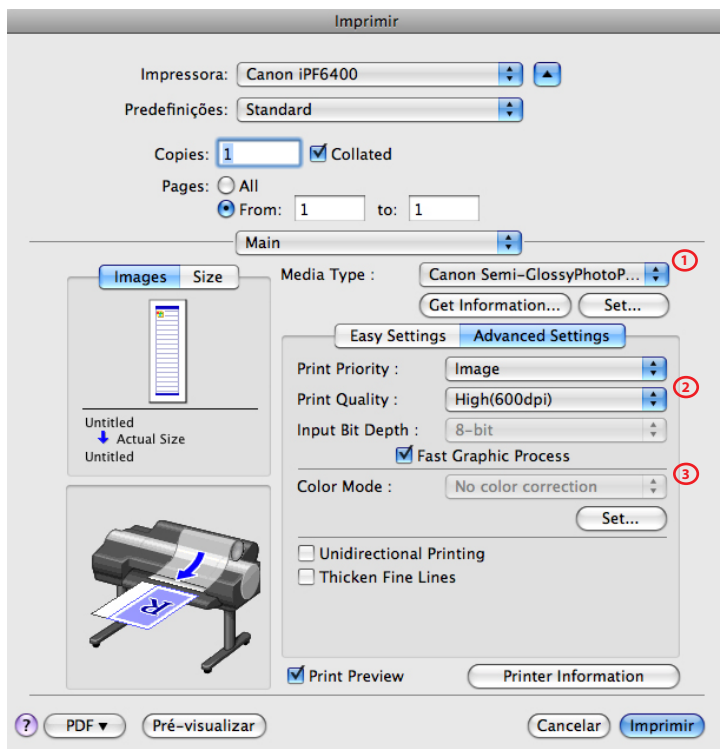
2) Printer Profile

LS_PremiumLuster240_600High_Cx300_PK.icc

3) Rendering Intent - Relative Colorimetric

4) Black Point Compensation activated

DRIVER SETTINGS



1) Media Type

Satin Photographic Paper 240gsm

2) Print Quality - High (600dpi)

3) Color Mode - No color correction