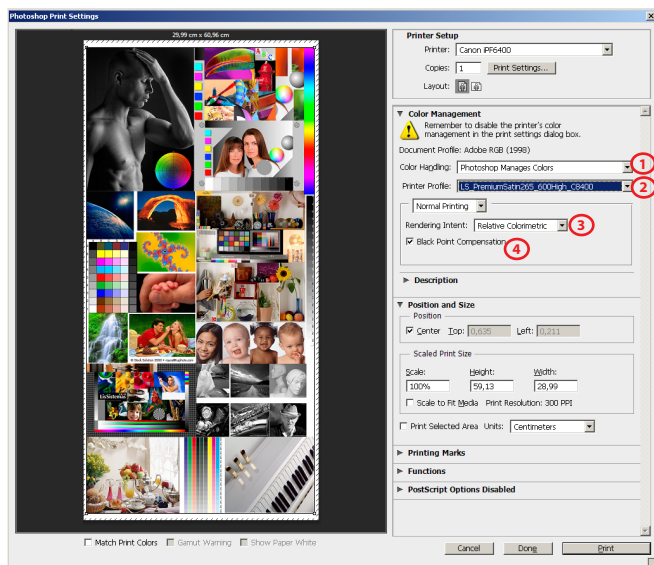


GUIDE FOR PRINTING ON WINDOWS

Install Profiles on Windows ---> c:/windows/system32/spool/drivers/color

PHOTOSHOP SETTINGS



1) Color Handling - Photoshop Manages Colors

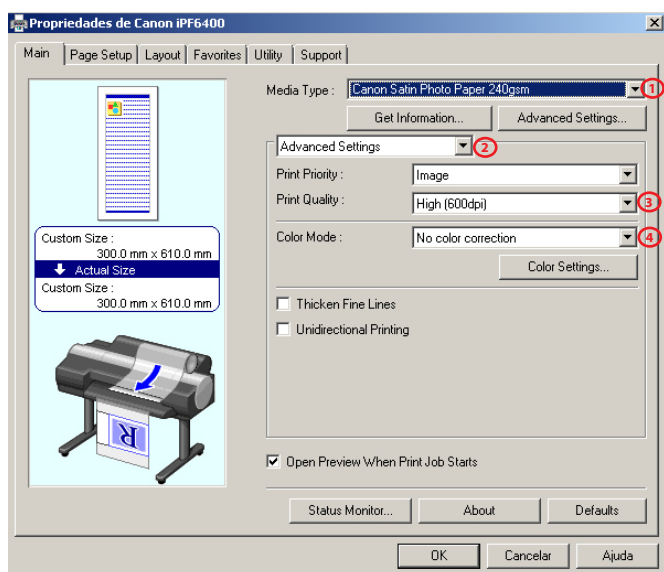
2) Printer Profile

LS_PremiumLuster240_Quality3_CPro_x000_PK.icc

3) Rendering Intent - Relative Colorimetric

4) Black Point Compensation activated

DRIVER SETTINGS



1) Media Type

Canon Satin Photo Paper 240gsm

2) Advanced Settings

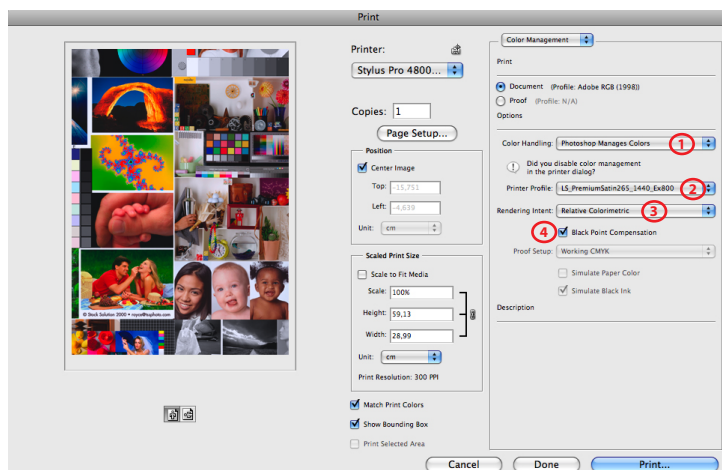
3) Print Quality - 3

4) Color Mode - No color correction

GUIDE FOR PRINTING ON MAC OS X

Install Profiles on Mac OS X ---> Macintosh HD > Library > ColorSync > Profiles

PHOTOSHOP SETTINGS



1) Color Handling - Photoshop Manages Colors

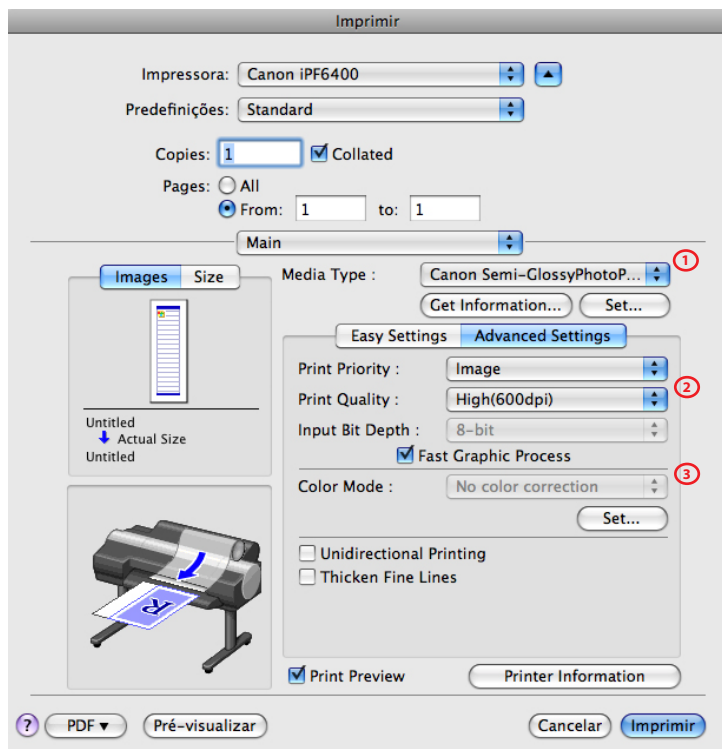
2) Printer Profile

LS_PremiumLuster240_Quality3_CPro_x000_PK.icc

3) Rendering Intent - Relative Colorimetric

4) Black Point Compensation activated

DRIVER SETTINGS



1) Media Type

Canon Satin Photo Paper 240gsm

2) Print Quality - 3

3) Color Mode - No color correction