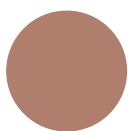


001
white



005
cream
ca. Pant. 479c



110
yellow
ca. Pant. 012c



106
sunflower yellow
ca. Pant. 137c



180
orange
ca. Pant. 021c



210
signal red
ca. Pant. 185c



200
red
ca. Pant. 186c



252
pink
ca. Pant. 507c



280
purple
ca. Pant. 2096c



320
light blue
ca. Pant. 298c



300
royal blue
ca. Pant. 286c



350
navy
ca. Pant. 532c



380
turquoise
ca. Pant. 7717c



422
light green
ca. Pant. 362c



400
green
ca. Pant. 7727c



730
grey
ca. Pant. 7543c



700
black



815
silver
ca. Pant. 877c



115
gold
ca. Pant. 871c



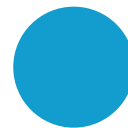
101
neon yellow



181
neon orange



241
neon pink



301
neon blue

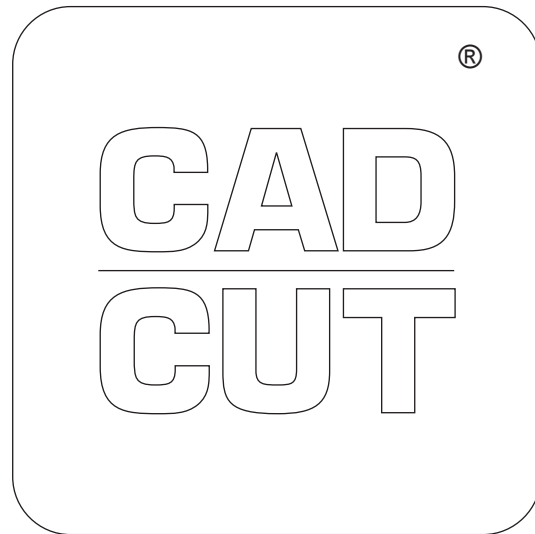


401
neon green



A CLASSIC AND DURABLE FILM, WITH A STICKY POLYESTER FILM CARRIER.

As there are so many colors available in the range, the material is perfect for multi-color designs. With a matte finish, and soft hand, and high opacity. CAD-CUT® PU Flex is a polyurethane film available in a large range of colours enabling you to produce your own individual look. It is supplied on a self-adhesive polyester carrier, it gives excellent opacity and produces a matte finish.



AVAILABLE IN

50 cm x 25 m rolls

RECOMMENDED FABRICS

- 100% cotton
- 100% polyester*
- Polyester-cotton blends

*Test before application!

CUTTING NOTES

You should always test cut prior to any production run. Remember cutter settings will need to be adjusted as the blade ages. For optimal cutting and weeding, maintain a line thickness of at least 1.5 mm for lettering and logos.

APPLICATION INSTRUCTIONS

- Temperature: 150°C
- Time: 10 sec.
- Pressure: medium
- (#4-8 on Hotronix®)
- Peel: warm - cold

MULTI-COLOUR DESIGNS

Apply background for 3-5 seconds, peel carrier cold. Repeat for additional colours. Finish with final application of 13-25 seconds. Peel cold.

ACCESSORIES RECOMMENDED

- Grip Cover Sheet
- Cover Sheet - Non-Sticky
- EZ Weeder® / LED Weeder

CARE INSTRUCTIONS

Machine wash up to 60° C using mild detergent. Do not use bleach. Dry at normal dryer settings on household machines. Do not dry-clean. Can be directly ironed.

STORAGE

Store in cool, dry area. Avoid direct heat, sunlight and humidity.

KEY

Easy weed	Thin
Ironable	Sticky carrier
Ironable only inside out	Multi-colour application
Washable	Peel hot
Sublimation	Application
Stretchable	
Flock	