

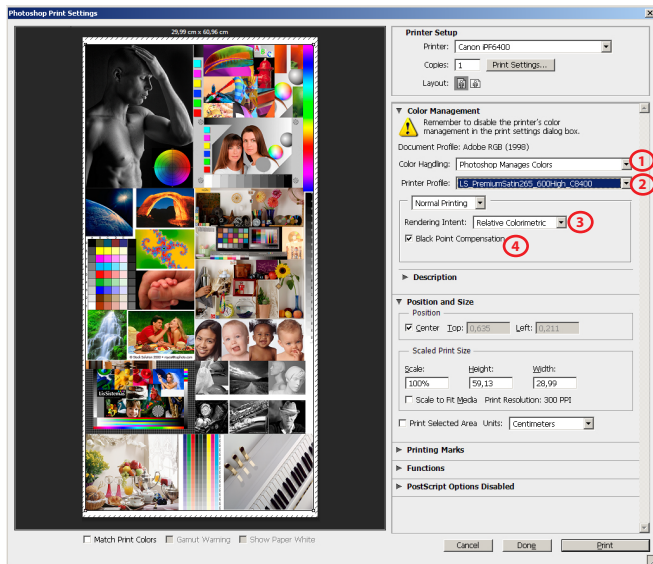
CANON iPF x400

LS PREMIUM GLOSSY 265g

GUIDE FOR PRINTING ON WINDOWS

Install Profiles on Windows ---> c:/windows/system32/spool/drivers/color

PHOTOSHOP SETTINGS



1) Color Handling - Photoshop Manages Colors

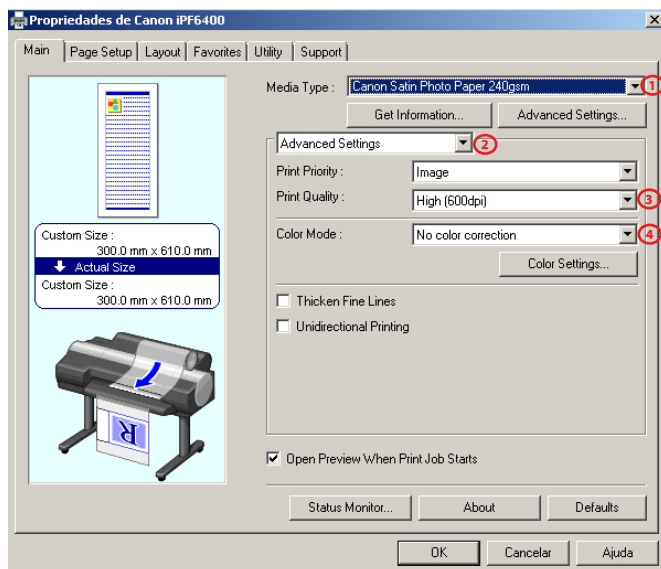
2) Printer Profile

LS_PremiumGlossy265_600High_Cx400_PK.icc

3) Rendering Intent - Relative Colorimetric

4) Black Point Compensation activated

DRIVER SETTINGS



1) Media Type

Glossy Photo Paper HG 255

2) Advanced Settings

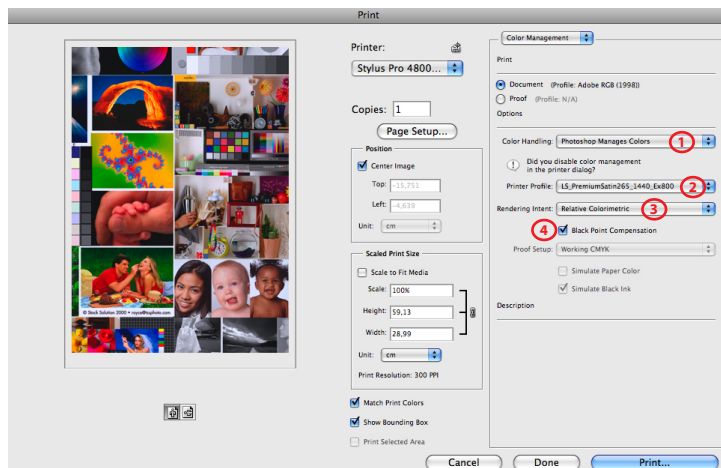
3) Print Quality - High (600dpi)

4) Color Mode - No color correction

GUIDE FOR PRINTING ON MAC OS X

Install Profiles on Mac OS X ---> Macintosh HD > User > Library > ColorSync > Profiles

PHOTOSHOP SETTINGS



1) **Color Handling** - Photoshop Manages Colors

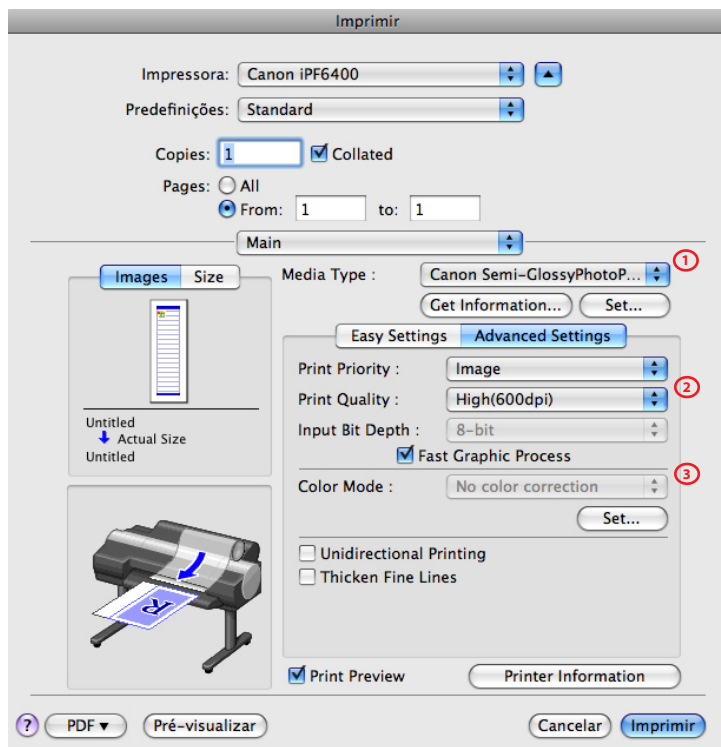
2) **Printer Profile**

LS_PremiumGlossy265_600High_Cx400_PK.icc

3) **Rendering Intent** - Relative Colorimetric

4) **Black Point Compensation** activated

DRIVER SETTINGS



1) **Media Type**

Glossy Photo Paper HG 255

2) **Print Quality** - High (600dpi)

3) **Color Mode** - No color correction