

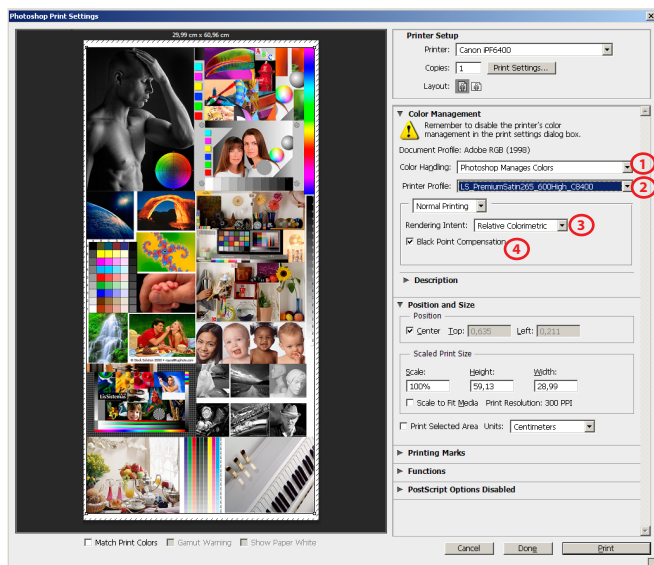
CANON iPF x300

LS PREMIUM CANVAS GLOSSY 340g

GUIDE FOR PRINTING ON WINDOWS

Install Profiles on Windows ---> c:/windows/system32/spool/drivers/color

PHOTOSHOP SETTINGS



1) Color Handling - Photoshop Manages Colors

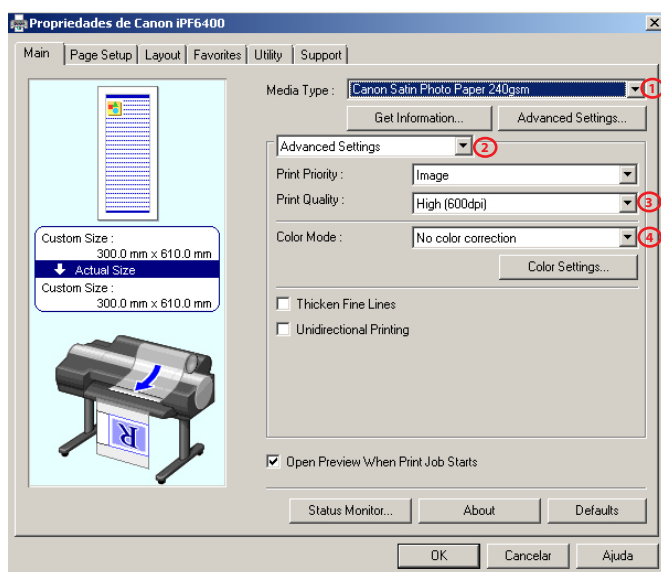
2) Printer Profile

LS_PremiumCanvasGlossy340_600Std_Cx300_PK.icc

3) Rendering Intent - Relative Colorimetric

4) Black Point Compensation activated

DRIVER SETTINGS



1) Media Type
Special 1

2) Advanced Settings

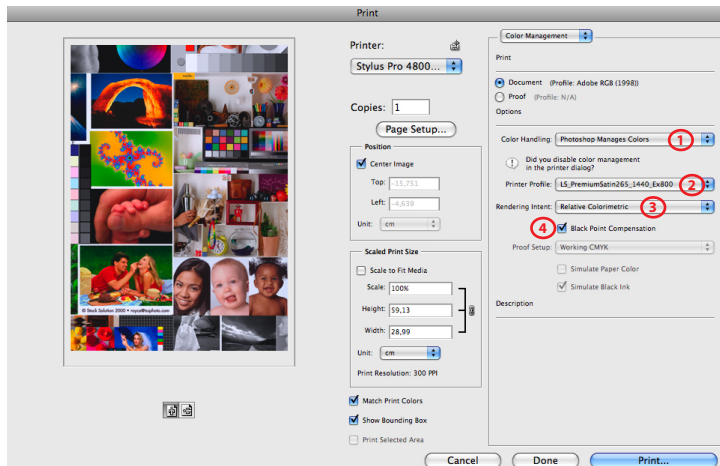
3) Print Quality - *Standard (600dpi)*

4) Color Mode - No color correction

GUIDE FOR PRINTING ON MAC OS X

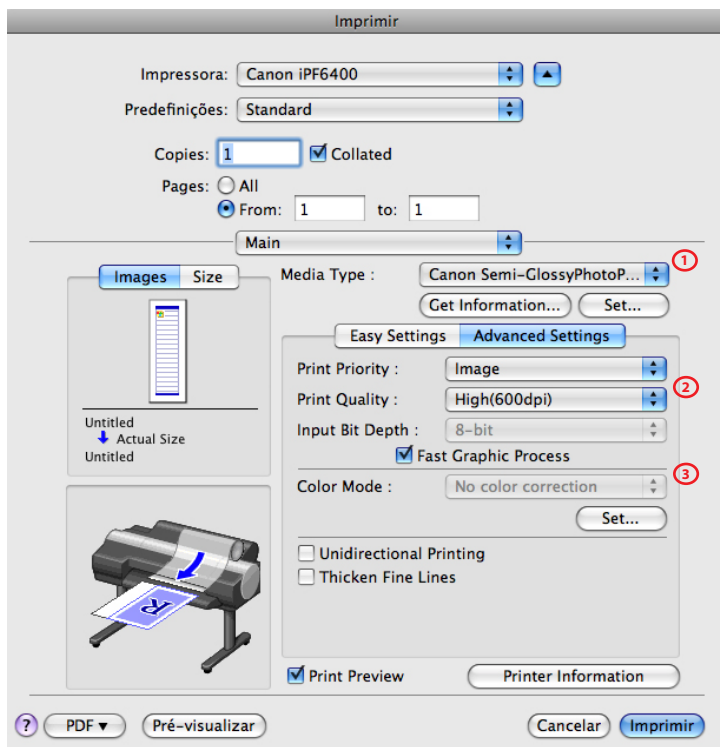
Install Profiles on Mac OS X ---> Macintosh HD > User > Library > ColorSync > Profiles

PHOTOSHOP SETTINGS



- 1) **Color Handling** - Photoshop Manages Colors
- 2) **Printer Profile**
LS_PremiumCanvasGlossy340_600Std_Cx300_PK.icc
- 3) **Rendering Intent** - Relative Colorimetric
- 4) **Black Point Compensation** activated

DRIVER SETTINGS



- 1) **Media Type**
Special 1
- 2) **Print Quality** - Standard (600dpi)
- 3) **Color Mode** - No color correction