

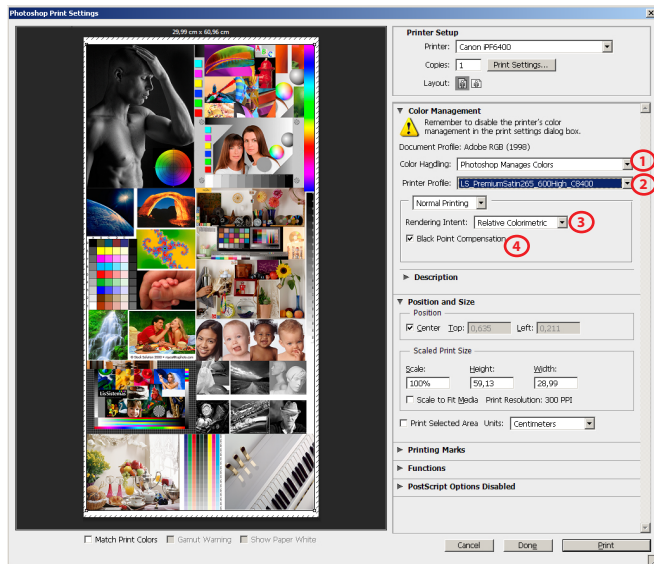
# CANON iPF x300

# LS FRONTLIT BANNER MATT 430g

## GUIDE FOR PRINTING ON WINDOWS

Install Profiles on Windows ---> c:/windows/system32/spool/drivers/color

## PHOTOSHOP SETTINGS



1) Color Handling - Photoshop Manages Colors

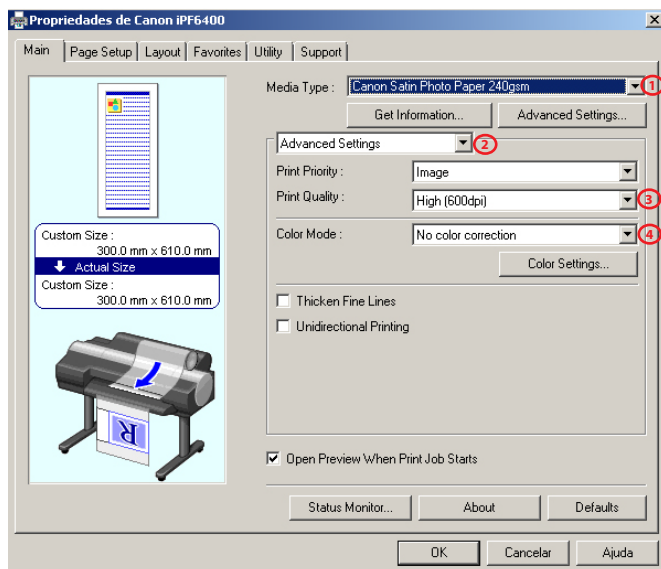
2) Printer Profile

*LS\_FrontlitBannerMatt430\_600High\_Cx300\_MK.icc*

3) Rendering Intent - Relative Colorimetric

4) Black Point Compensation activated

## DRIVER SETTINGS



1) Media Type

*Adhesive Synthetic Paper*

2) Advanced Settings

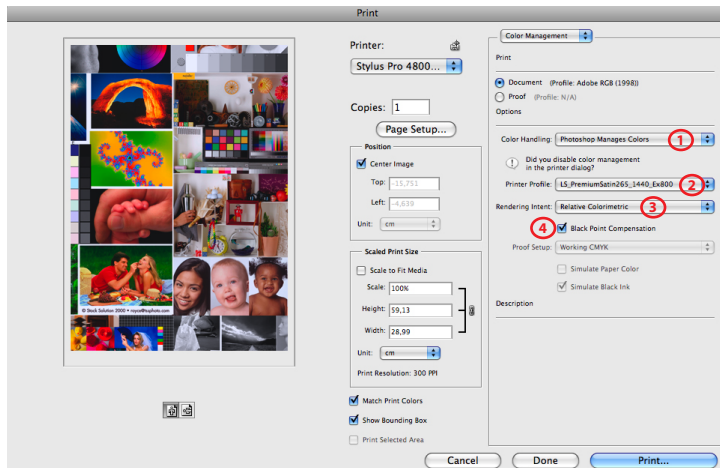
3) Print Quality - High (600dpi)

4) Color Mode - No color correction

## GUIDE FOR PRINTING ON MAC OS X

Install Profiles on Mac OS X ---> Macintosh HD > User > Library > ColorSync > Profiles

## PHOTOSHOP SETTINGS



1) Color Handling - Photoshop Manages Colors

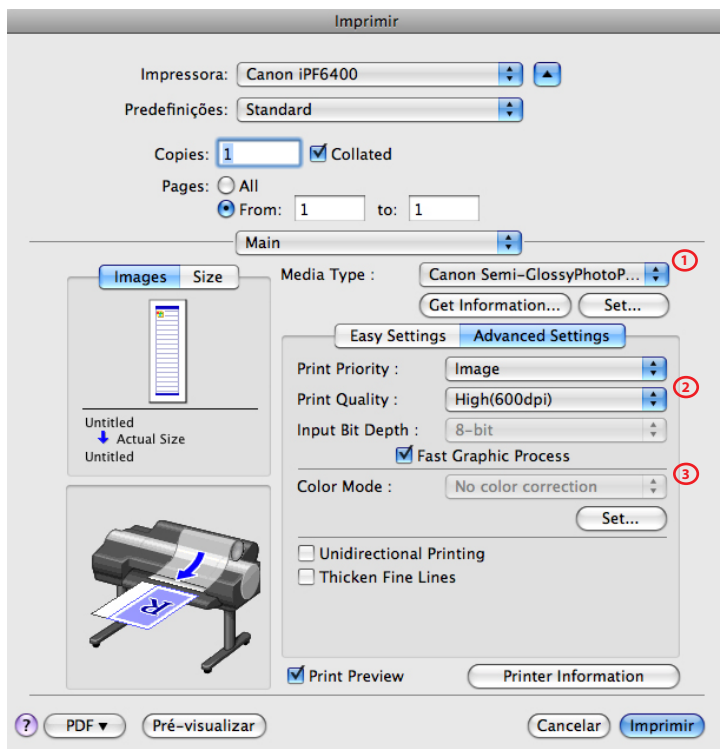
2) Printer Profile

*LS\_FrontlitBannerMatt430\_600High\_Cx300\_MK.icc*

3) Rendering Intent - Relative Colorimetric

4) Black Point Compensation activated

## DRIVER SETTINGS



1) Media Type

*Adhesive Synthetic Paper*

2) Print Quality - High (600dpi)

3) Color Mode - No color correction