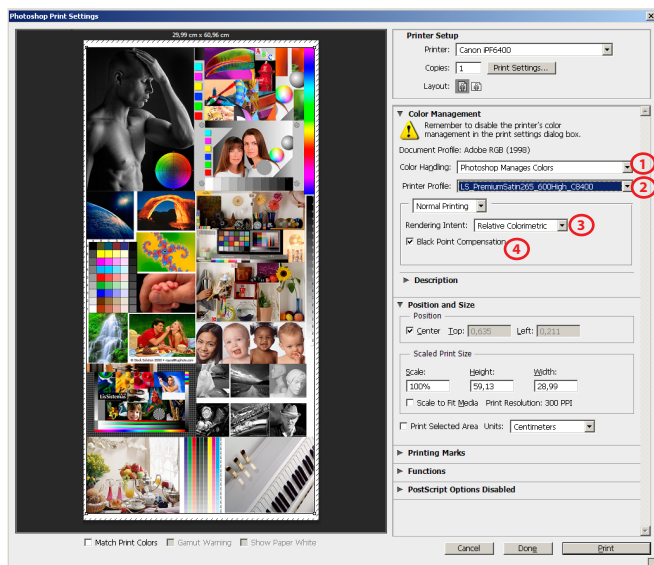


## GUIDE FOR PRINTING ON WINDOWS

Install Profiles on Windows ---> c:/windows/system32/spool/drivers/color

## PHOTOSHOP SETTINGS



1) Color Handling - Photoshop Manages Colors

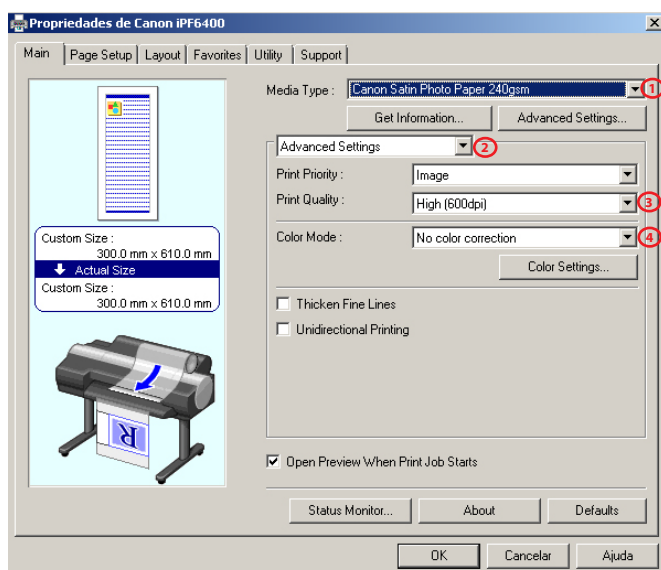
2) Printer Profile

*LS\_BestMatt\_300std\_Cx400\_MK.icc*

3) Rendering Intent - Relative Colorimetric

4) Black Point Compensation activated

## DRIVER SETTINGS



1) Media Type

*Matt Coated Paper 180g*

2) Advanced Settings

3) Print Quality - Standard (300dpi)

4) Color Mode - No color correction

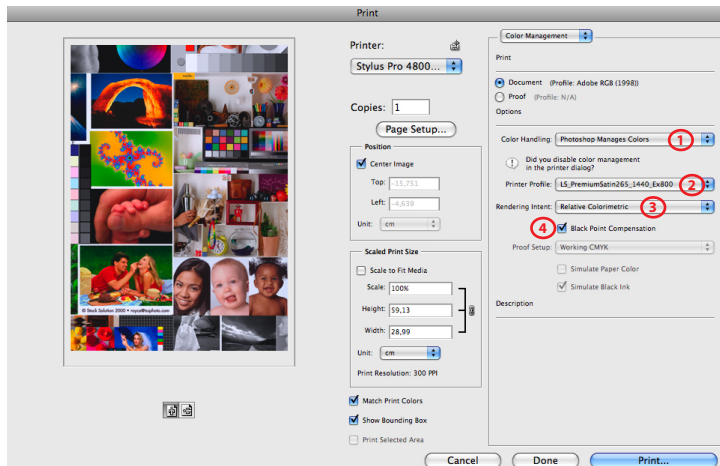
## CANON iPF x400

## LS BEST MATT 128/190/220g

### GUIDE FOR PRINTING ON MAC OS X

Install Profiles on Mac OS X ---> Macintosh HD > User > Library > ColorSync > Profiles

### PHOTOSHOP SETTINGS



1) Color Handling - Photoshop Manages Colors

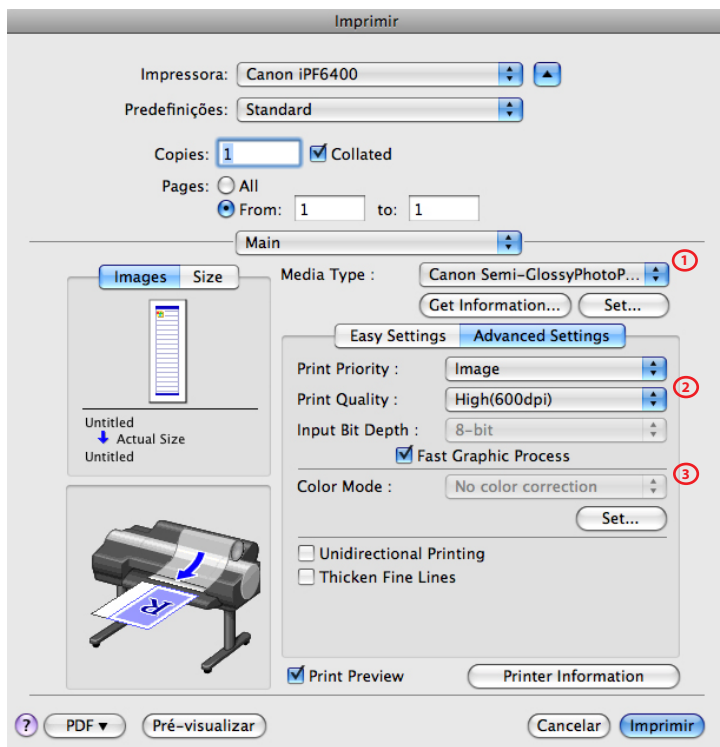
2) Printer Profile

*LS\_BestMatt\_300std\_Cx400\_MK.icc*

3) Rendering Intent - Relative Colorimetric

4) Black Point Compensation activated

### DRIVER SETTINGS



1) Media Type

*Matt Coated Paper 180g*

2) Print Quality - Standard (300dpi)

3) Color Mode - No color correction