

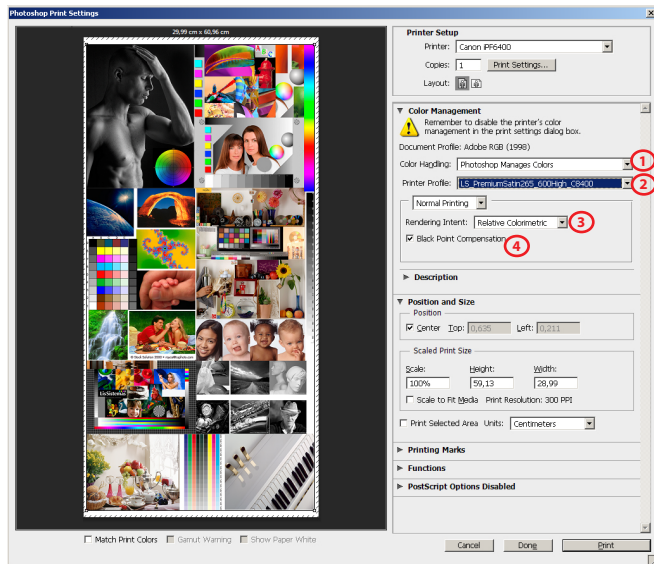
CANON Pro x000

LS COTTON RADIANT WHITE 270g

GUIDE FOR PRINTING ON WINDOWS

Install Profiles on Windows ---> c:/windows/system32/spool/drivers/color

PHOTOSHOP SETTINGS



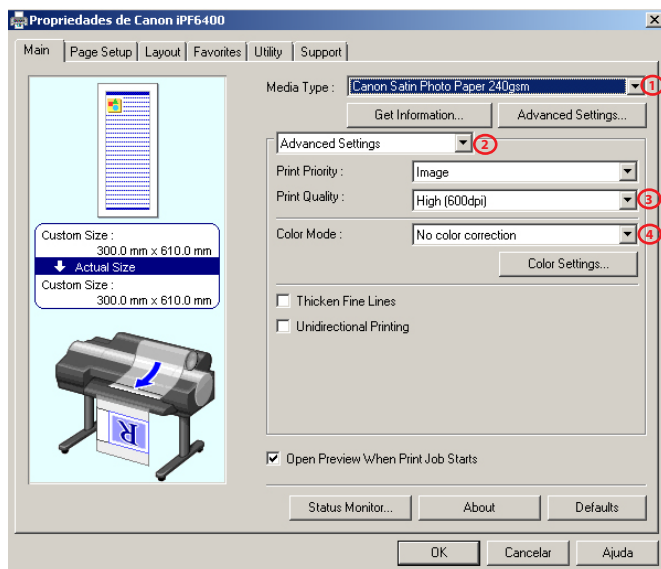
1) Color Handling - Photoshop Manages Colors

2) Printer Profile

LS_CottonRadiantWhite270_Quality3_CPro_x000_MK.icm

3) Rendering Intent - Relative Colorimetric

DRIVER SETTINGS



1) Media Type

HeavyWeight Fine Art Paper

2) Advanced Settings

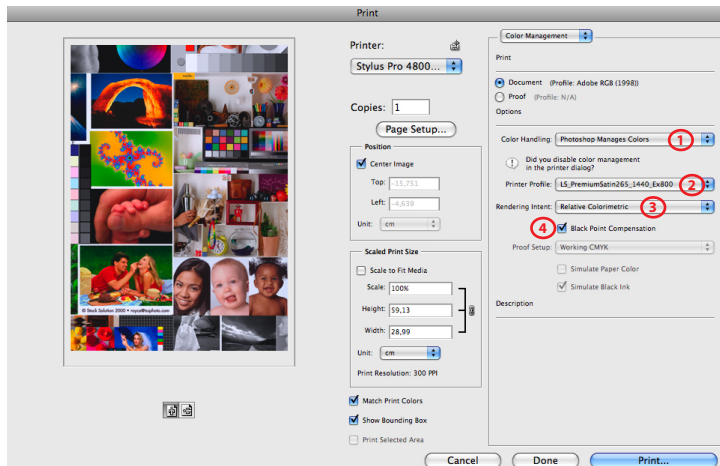
3) Print Quality - Highest (600dpi)

4) Color Mode - No color correction

GUIDE FOR PRINTING ON MAC OS X

Install Profiles on Mac OS X ---> Macintosh HD > User > Library > ColorSync > Profiles

PHOTOSHOP SETTINGS



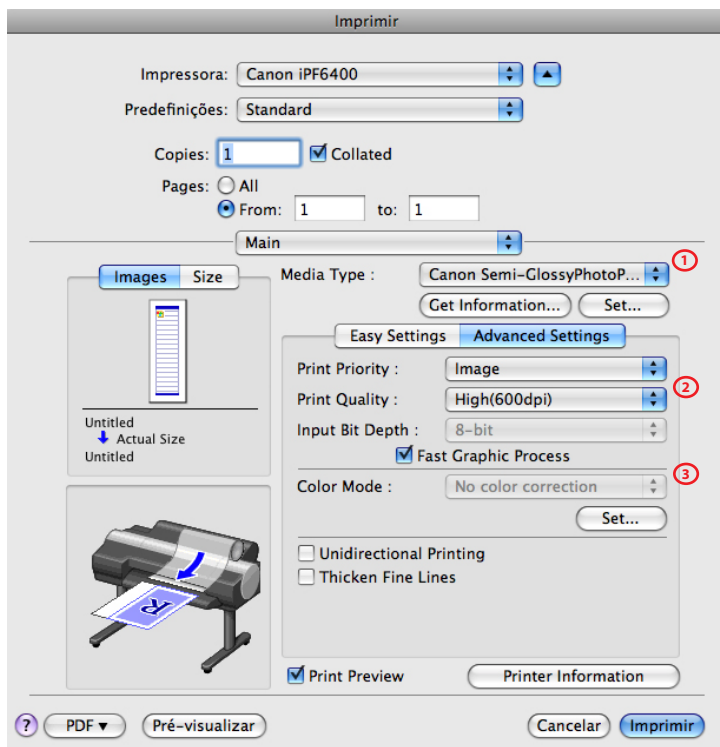
1) Color Handling - Photoshop Manages Colors

2) Printer Profile

LS_CottonRadiantWhite270_Quality3_CPro_x000_MK.icm

3) Rendering Intent - Relative Colorimetric

DRIVER SETTINGS



1) Media Type

HeavyWeight Fine Art Paper

2) Print Quality - Highest (600dpi)

3) Color Mode - No color correction