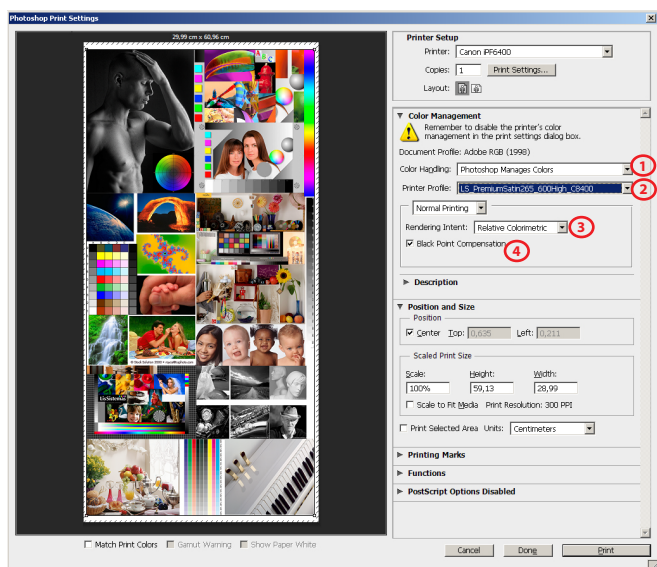


## GUIDE FOR PRINTING ON WINDOWS

Install Profiles on Windows ---> c:/windows/system32/spool/drivers/color

## PHOTOSHOP SETTINGS



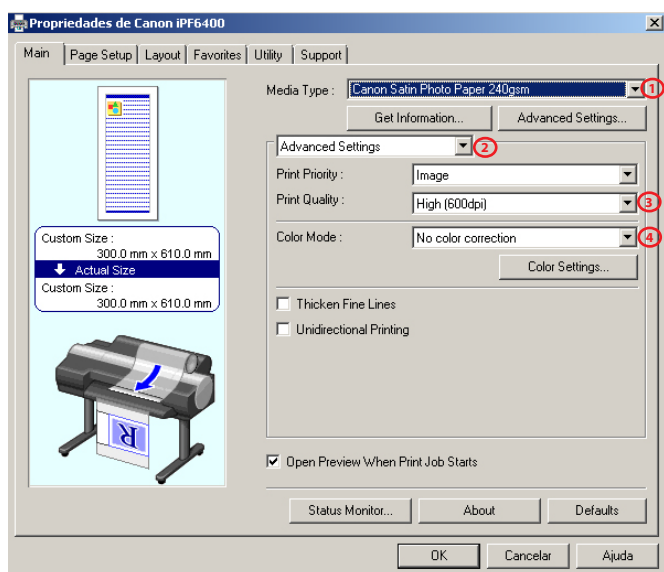
1) Color Handling - Photoshop Manages Colors

2) Printer Profile  
*HFA\_Can9100\_PK\_BarytaFB.icc*

3) Rendering Intent - Relative Colorimetric

4) Black Point Compensation activated

## DRIVER SETTINGS



1) Media Type  
*Special 5*

2) Advanced Settings

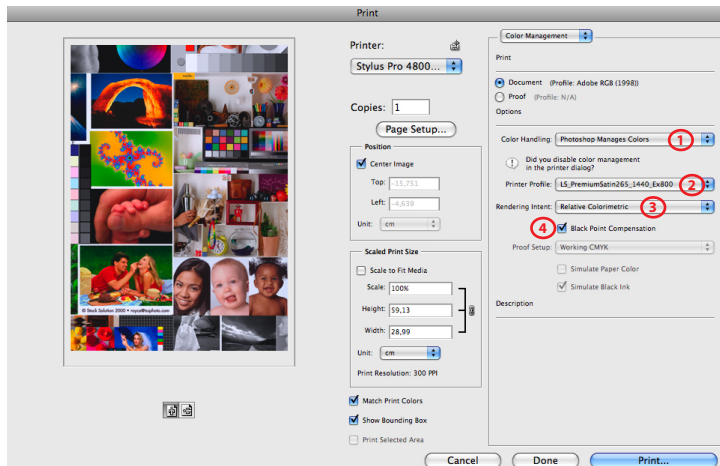
3) Print Quality - Highest (600dpi)

4) Color Mode - No color correction

## GUIDE FOR PRINTING ON MAC OS X

Install Profiles on Mac OS X ---> Macintosh HD > User > Library > ColorSync > Profiles

## PHOTOSHOP SETTINGS



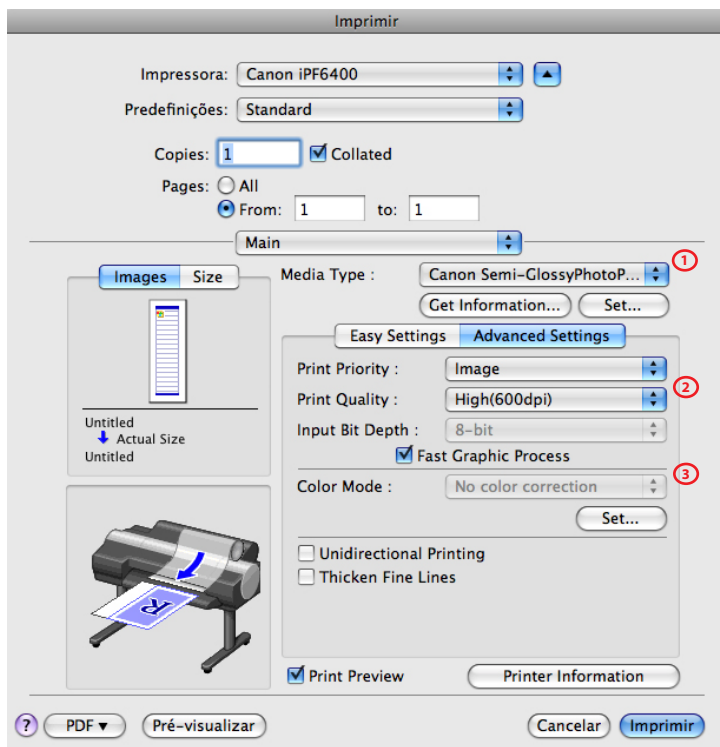
1) Color Handling - Photoshop Manages Colors

2) Printer Profile  
HFA\_Can9100\_PK\_BarytaFB.icc

3) Rendering Intent - Relative Colorimetric

4) Black Point Compensation activated

## DRIVER SETTINGS



1) Media Type  
Special 5

2) Print Quality - Highest (600dpi)

3) Color Mode - No color correction