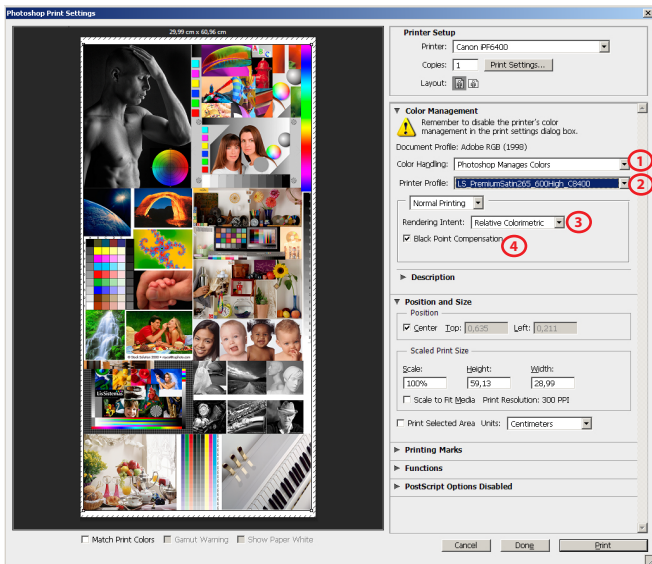


GUIDE FOR PRINTING ON WINDOWS

Install Profiles on Windows ---> c:/windows/system32/spool/drivers/color

PHOTOSHOP SETTINGS



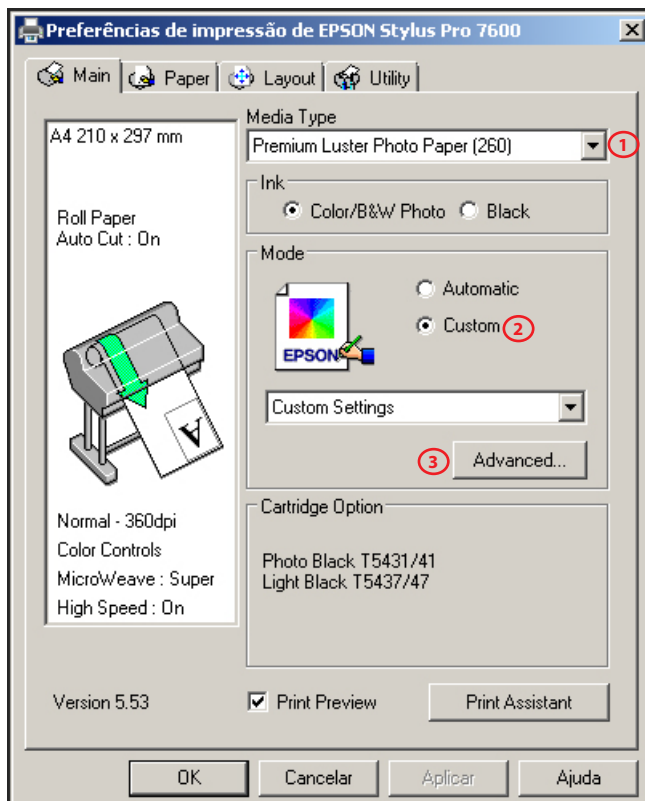
1) **Color Handling** - Photoshop Manages Colors

2) **Printer Profile**
HFA_Eps9600_PK_BarytaFB.icc

3) **Rendering Intent** - Relative Colorimetric

4) **Black Point Compensation** activated

DRIVER SETTINGS



1) **Media Type**

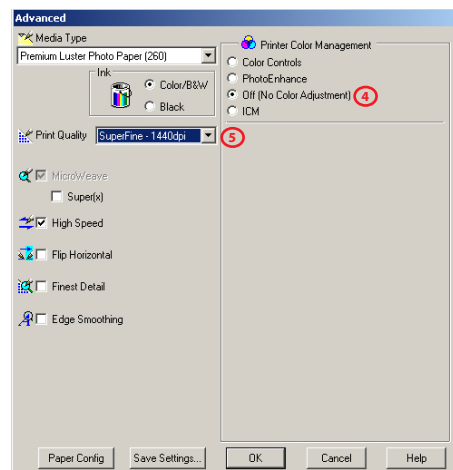
Premium Luster Photo Paper

2) **Mode** - Custom

3) Click on the Button **Advanced**

4) **Printer Color Management** - Off (No Color Adjustment)

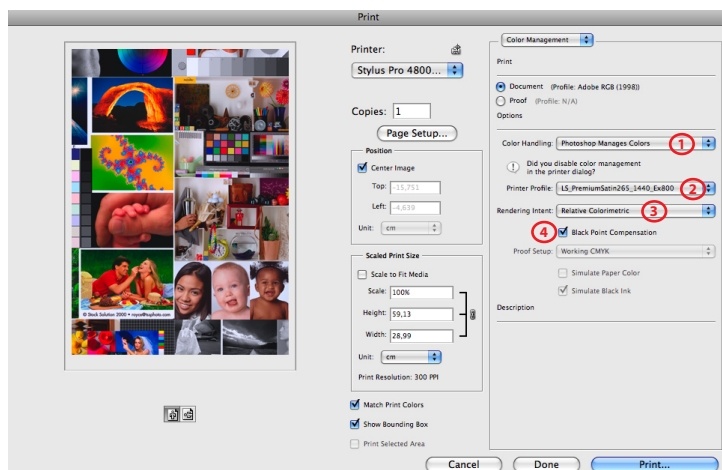
5) **Print Quality** - SuperFine - 1440dpi



GUIDE FOR PRINTING ON MAC OS X

Install Profiles on Mac OS X ---> Macintosh HD > User > Library > ColorSync > Profiles

PHOTOSHOP SETTINGS



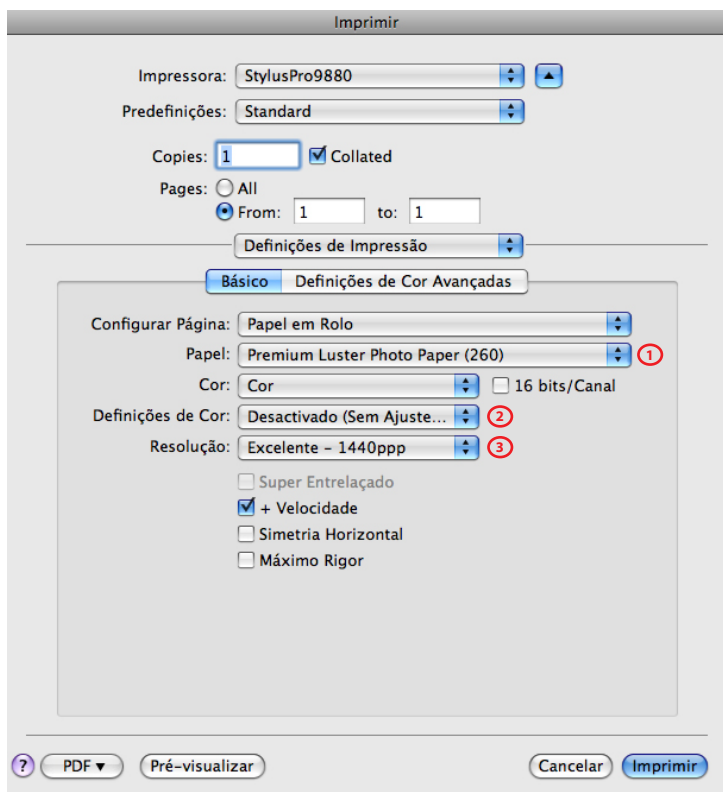
1) Color Handling - Photoshop Manages Colors

2) Printer Profile
HFA_Eps9600_PK_BarytaFB.icc

3) Rendering Intent - Relative Colorimetric

4) Black Point Compensation activated

DRIVER SETTINGS



1) Media Type
Premium Luster Photo Paper

2) Color Mode - No Color Adjustment

3) Print Quality - SuperFine - 1440dpi