

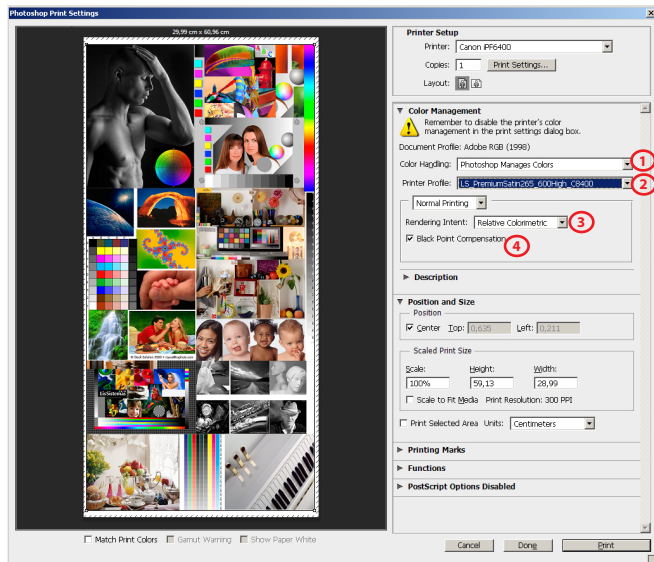
## CANON Pro x000

## HAHNEMUHLE STUDIO ENHANCED 210g

### GUIDE FOR PRINTING ON WINDOWS

Install Profiles on Windows ---> c:/windows/system32/spool/drivers/color

### PHOTOSHOP SETTINGS



1) Color Handling - Photoshop Manages Colors

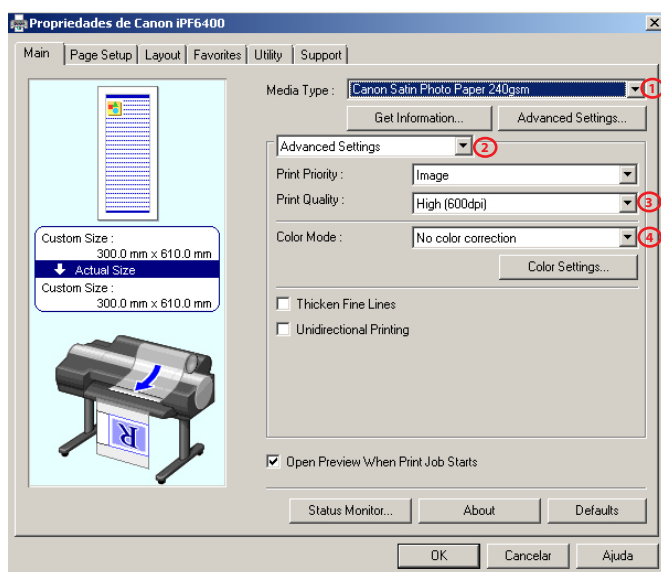
2) Printer Profile

*HFAPhoto\_CanPro2000\_MK\_HahnemuehlePhotoMattFibreDuo.icc*

3) Rendering Intent - Relative Colorimetric

4) Black Point Compensation activated

### DRIVER SETTINGS



1) Media Type

*HeavyWeight Fine Art Paper*

2) Advanced Settings

3) Print Quality - 3

4) Color Mode - No color correction

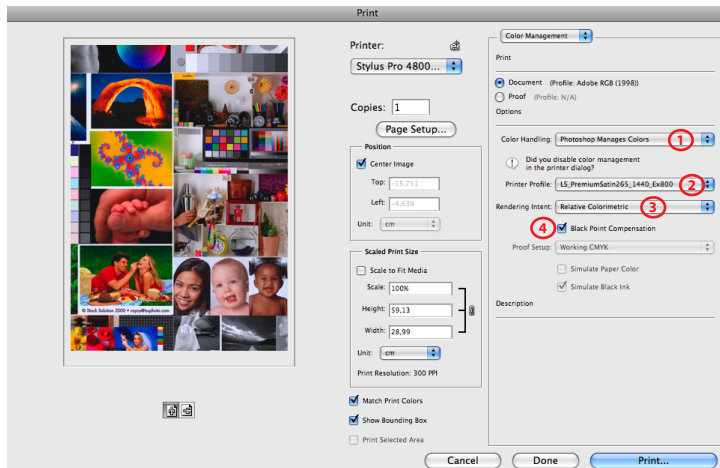
## CANON Pro x000

## HAHNEMUHLE STUDIO ENHANCED 210g

### GUIDE FOR PRINTING ON MAC OS X

Install Profiles on Mac OS X ---> Macintosh HD > Library > ColorSync > Profiles

### PHOTOSHOP SETTINGS



1) Color Handling - Photoshop Manages Colors

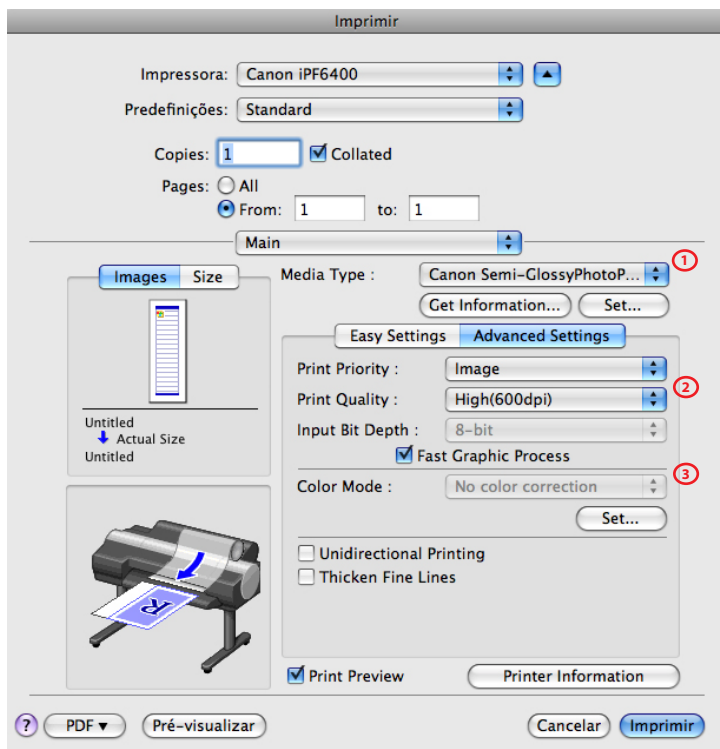
2) Printer Profile

HFAPhoto\_CanPro2000\_MK\_HahnemuehlePhotoMattFibreDuo.icc

3) Rendering Intent - Relative Colorimetric

4) Black Point Compensation activated

### DRIVER SETTINGS



1) Media Type

HeavyWeight Fine Art Paper

2) Print Quality - 3

3) Color Mode - No color correction